

# What is The Georgia Piedmont Arts Center?



**The Georgia Piedmont Arts Center** is an ever-growing, member-run, 501(c)3 non-profit center for fine arts. We are focused on increasing an awareness of and an appreciation for fine arts in our community, as well as supporting the efforts of area artists.

**Be part of the excitement** by becoming a member - membership is for the calendar year. You will reap many benefits and much support.

**Our goal** is to foster creativity and an appreciation of fine arts in the community. This is accomplished through classroom instruction, gallery exhibitions and festivals. We strive to keep the gallery and working studio open on Saturdays from 10:00 a.m. until 3:00 p.m.

**Contributions** of equipment/supplies and monetary donations are greatly appreciated, and vital to ensure that the center grows and thrives. If you do not have money or materials to donate, you can still contribute. Donate your time and knowledge to help make your center grow. There are many committees and areas where we can use your help. Please contact us by email at [gpacgpac@yahoo.com](mailto:gpacgpac@yahoo.com) or thru the web at [www.GeorgiaPiedmontArtsCenter.com](http://www.GeorgiaPiedmontArtsCenter.com).

**Meetings** are held on the Third Thursday of each month at 7:00 p.m. Everyone is invited.

## Membership Levels & Benefits

**Platinum Patron of the Guild - \$5,000+**

**Gold Patron of the Guild - \$2,000-\$4,999**

**Silver Patron of the Guild - \$1,000 - \$1,999**

**Bronze Patron of the Guild - \$500-\$999**

Friend of the Guild privileges

Recognition in printed materials and on the Georgia Piedmont Arts Center web site.

May sponsor art shows and be eligible to judge at exhibitions.

**Friend of the Guild - \$25**

10% discount on classes

**Senior (60 & Better) or Full-Time Student—\$35**  
Single Member Privileges

**Single Member - \$50**

Full voting Privileges

15% discount on classes

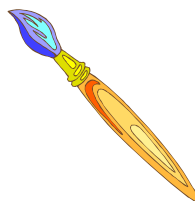
Reduced fees to exhibit in GPAC shows

May teach classes if qualified

Agrees to donate time and expertise to GPAC

**Family Membership - \$75**

Same privileges as single member, but includes an additional member of their household.



**Yes, I want to be a member!**

Please complete this form and return to:

Georgia Piedmont Arts Center

P.O. Box 133, Auburn, GA 30011

[www.GeorgiaPiedmontArtsCenter.com](http://www.GeorgiaPiedmontArtsCenter.com)

[gpacgpac@yahoo.com](mailto:gpacgpac@yahoo.com)

Name

Address

Address (Cont.)

City

State

Zip

Home Phone

Cell Phone

Email

Web Site

My Art Interests

**I wish to join at the following level:**

- Platinum Patron of the Guild - over \$5,000
- Gold Patron of the Guild - \$2,000-\$4,999
- Silver Patron of the Guild - \$1,000-\$1,999
- Bronze Patron of the Guild - \$500-\$999
- Friend of the Guild - \$25
- Senior or Student—\$35
- Single Membership - \$50
- Family Member - \$75

Total Amount Enclosed: \$ \_\_\_\_\_

(Please make check payable to GPAC)

Mail To: Georgia Piedmont Arts Center

P.O. Box 133

Auburn, GA 30011